

# Cheetah Dual 60H 325-345 Watt

## MONOCRYSTALLINE MODULE

Positive power tolerance of 0~+3%

ISO9001:2015、ISO14001:2015、OHSAS18001  
certified factory.

IEC61215、IEC61730 certified products.



PERC



## KEY FEATURES



### PID Resistance:

Excellent Anti-PID performance guarantee limited power degradation for mass production.



### Higher Lifetime Power Yield:

0.5% annual power degradation  
30 year linear power warranty



### Saving BOS Cost:

Designed for high voltage systems of up to 1500 VDC, saving BOS cost



### Improved Durability and Reliability:

Dual glass reduces micro-cracking, snail trails, corruptions caused by moisture, sand, salt mist, acid, alkali, etc.



### Less Maintenance Requirement:

Reduced soiling and requires less maintenance and enhances fire safety



### Aesthetically Pleasing Design:

White encapsulation material maximizes module efficiency up to 20.23% (60-mono max. output 345W); Transparent EVA increases light transmission, ideal for installations requiring light to pass through

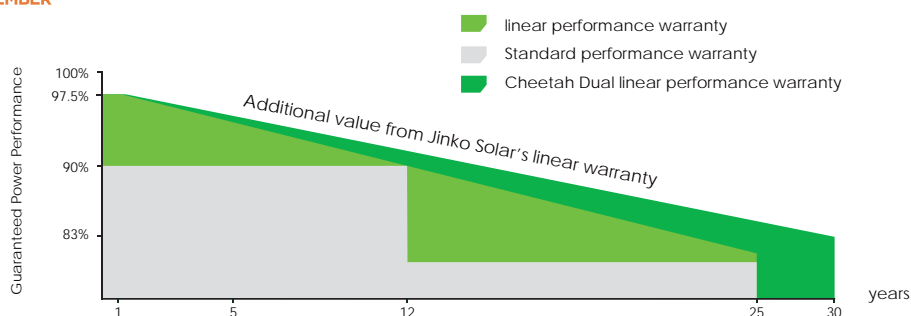


### Strengthened Mechanical Support:

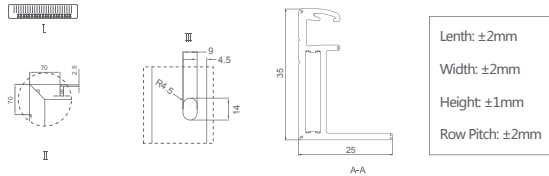
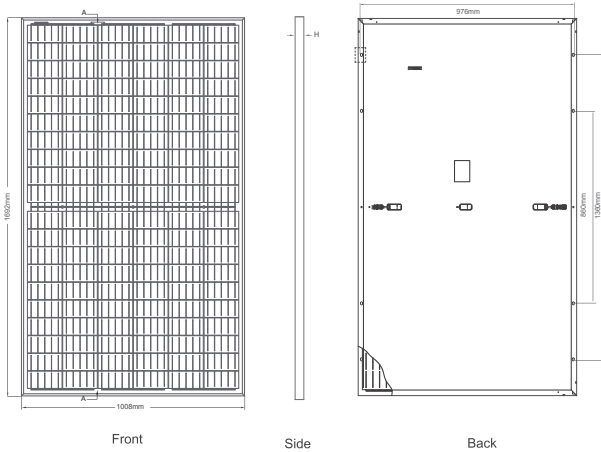
5400 Pa snow load, 2400 Pa wind load

## LINEAR PERFORMANCE WARRANTY

12 Year Product Warranty • 30 Year Linear Power Warranty  
0.5% Annual Degradation Over 30 years



## Engineering Drawings

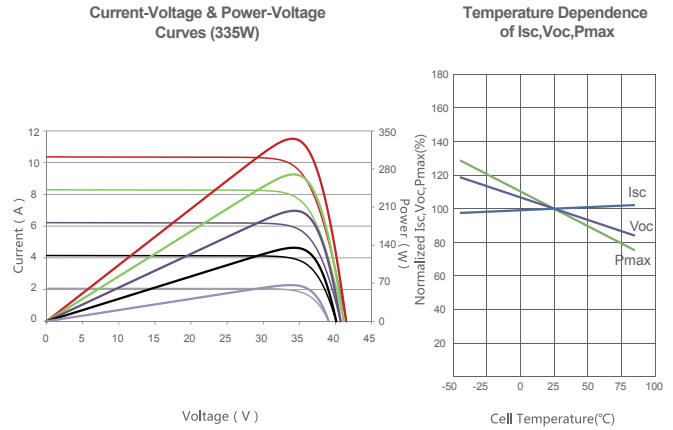


## Packaging Configuration

( Two pallets = One stack )

30pcs/pallets, 60pcs/stack, 780pcs/ 40'HQ Container

## Electrical Performance & Temperature Dependence



## Mechanical Characteristics

Cell Type	Mono PERC 158.75×158.75mm
No. of cells	120 (12×10)
Dimensions	1692x1008x35mm (66.62x39.69x1.38 inch)
Weight	26.5kg (58.43 lbs)
Front Glass	2.5mm, High transmission, Antireflection coating, heat strengthened glass
Back Glass	2.5mm heat strengthened glass
Junction Box	IP67 Rated
Output Cables	TUV 1×4.0mm <sup>2</sup> (+): 250mm, (-): 150mm or customized length

## SPECIFICATIONS

Module Type	JKM325M-60H-DV		JKM330M-60H-DV		JKM335M-60H-DV		JKM340M-60H-DV		JKM345M-60H-DV	
	STC	NOCT	STC	NOCT	STC	NOCT	STC	NOCT	STC	NOCT
Maximum Power (Pmax)	325Wp	242Wp	330Wp	246Wp	335Wp	250Wp	340Wp	253Wp	345Wp	257Wp
Maximum Power Voltage (Vmp)	33.6V	31.6V	33.8V	31.8V	34.0V	32.0V	34.2V	32.2V	34.4V	32.4V
Maximum Power Current (Imp)	9.68A	7.66A	9.77A	7.74A	9.87A	7.82A	9.96A	7.86A	10.04A	7.94A
Open-circuit Voltage (Voc)	41.1V	38.0V	41.3V	38.2V	41.5V	38.4V	41.7V	38.6V	41.9V	38.8V
Short-circuit Current (Isc)	10.20A	8.54A	10.31A	8.65A	10.36A	8.74A	10.55A	8.86A	10.64A	8.97A
Module Efficiency STC (%)	18.92%		19.21%		19.50%		19.79%		20.23%	
Operating Temperature(°C)	-40°C~+85°C									
Maximum system voltage	1500VDC (IEC)									
Maximum series fuse rating	20A									
Power tolerance	0~+3%									
Temperature coefficients of Pmax	-0.35%/°C									
Temperature coefficients of Voc	-0.29%/°C									
Temperature coefficients of Isc	0.048%/°C									
Nominal operating cell temperature (NOCT)	45±2°C									

\* STC: Irradiance 1000W/m<sup>2</sup> Cell Temperature 25°C

NOCT: Irradiance 800W/m<sup>2</sup> Ambient Temperature 20°C

\* Power measurement tolerance: ± 3%

AM=1.5

AM=1.5

Wind Speed 1m/s